



Exmoor
Horn Wool™

Fair Isle hat designed for Exmoor Horn Wool



Exmoor Horn Wool commissioned this beanie hat design by Linda Moss to showcase our beautiful worsted-spun pure wool DK yarn in colours that reflect the landscape of Exmoor and its coast. The Exmoor Flora colourway combines the colours of the moorland, while the Porlock Bay colourway (as above) shows the many shades of the sea and local shoreline. The hat coordinates in pattern and colour with a sweater of the same name.

This is a close-fitting Fair Isle patterned hat in an adult woman's size. It just covers the ears and won't blow off. The Fair Isle pattern extends right to the crown of the hat, but simple shaping makes it a relatively quick and easy colourwork project. Only 2 colours are in use at once and weaving in is not necessary because of frequent colour changes. It is constructed in the round, using five pattern repeats and the only shaping is knit 2 together.

Knitting directions.

The hat is knitted from the ribbed brim up to the crown, in the round, in 5 pattern repeats. The main section is knitted as a cylindrical tube, then the decreases to the top of the crown are Slip 1, Knit1, pass slipped stitch over (Sl1K1psso) at the end of each pattern repeat.

Yarn: Exmoor Horn DK pure wool: 25 gms background colour, 15 gms of each of the 3 contrast colours (see charts for recommended colours.)

Needles: 3.75mm and 4.5mm circular needles or DPNS. For the Magic Loop technique, at least 80mm long, or a sequence of smaller-diameter needles. Also 5 markers to place at pattern repeats if you like to use them.

Gauge

20 stitches and 24 rows to 10cm on 4.5mm needle: adjust your needle size if necessary, although the final blocking creates some flexibility in sizing.

Using the background colour (for Porlock Bay, this is Dark Skies (blue) ; for Exmoor Flora it is Bossington Barley (soft yellow)) and the larger needle, cast on 90 stitches (I like to use a purl cast-on as it is more flexible). Change to the smaller needle, and knit a **k1p1** rib all round. Join into a round, or continue flat for the ribbing and then join at the start of the Fair Isle pattern, sewing up the short seam of the ribbing later. This ensures you won't get the ribbing twisted. Continue with the ribbing for 4cms.

Change back to the larger needle, join into a round if you haven't already done so. Start knitting in the round, knit every stitch and every round, no purl. Knit from the chart for your chosen colourway, commencing from the bottom right, making 5 repeats of the charted pattern every round. Strand the unused yarn across the back of the work loosely. There should be no need to weave in as the colour changes are frequent.

When you reach the part of the chart where the pattern starts to slope into a triangular shape, at each "step" in the pattern, sl1, K1, psso. at the end of each pattern repeat. These occur every second round 2 times, then every round. The Fair Isle design should maintain its integrity as you progress.

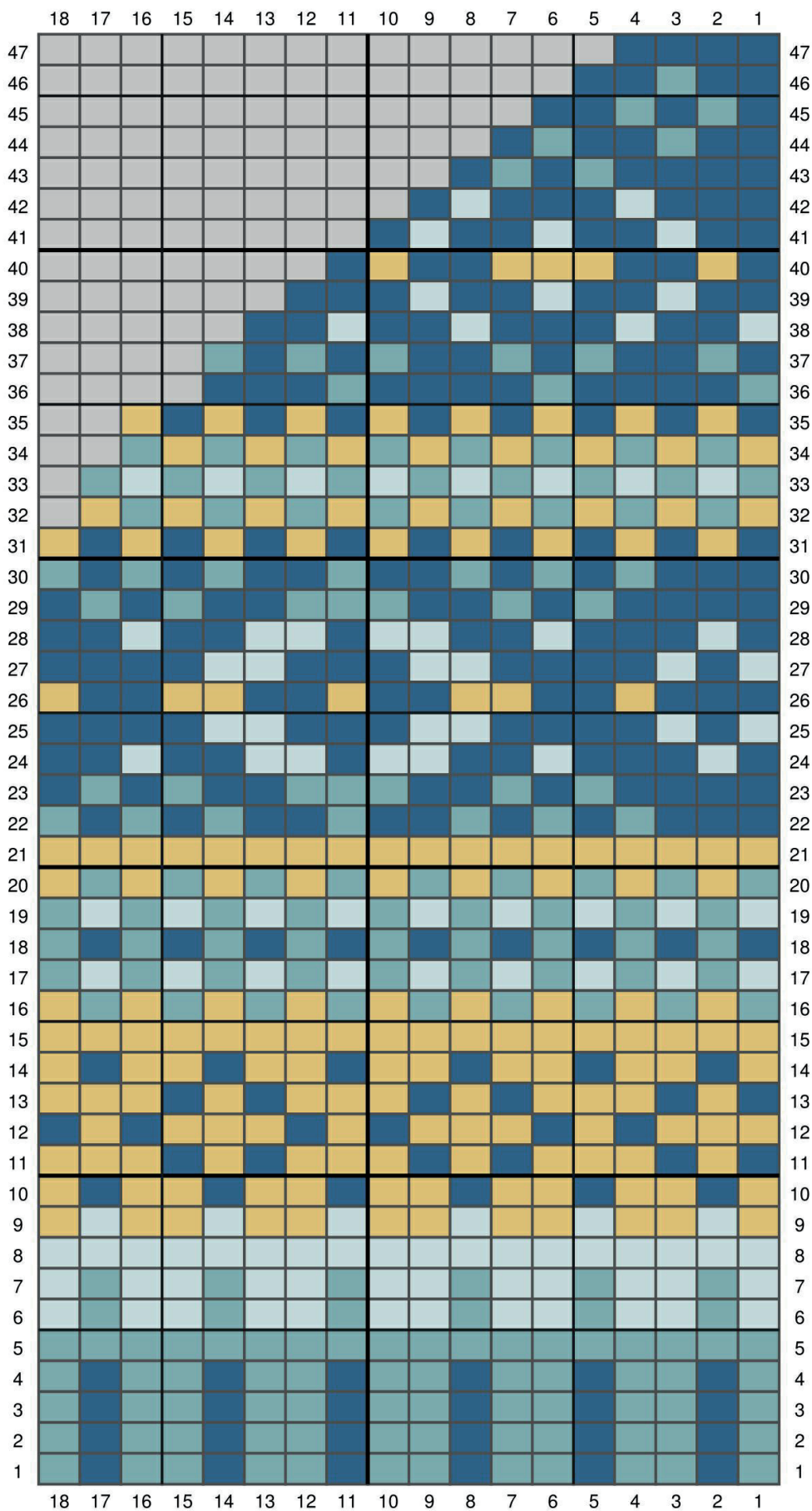
At the end of the charted section, you should have 20 stitches remaining. With the background colour, knit a final round of knit 2 tog. all round, leaving you with 10 stitches. Cut the yarn leaving a 30cm tail, and thread this through the remaining stitches several times to fasten off. Secure the tail in inside the hat. Sew up the ribbing if needed.

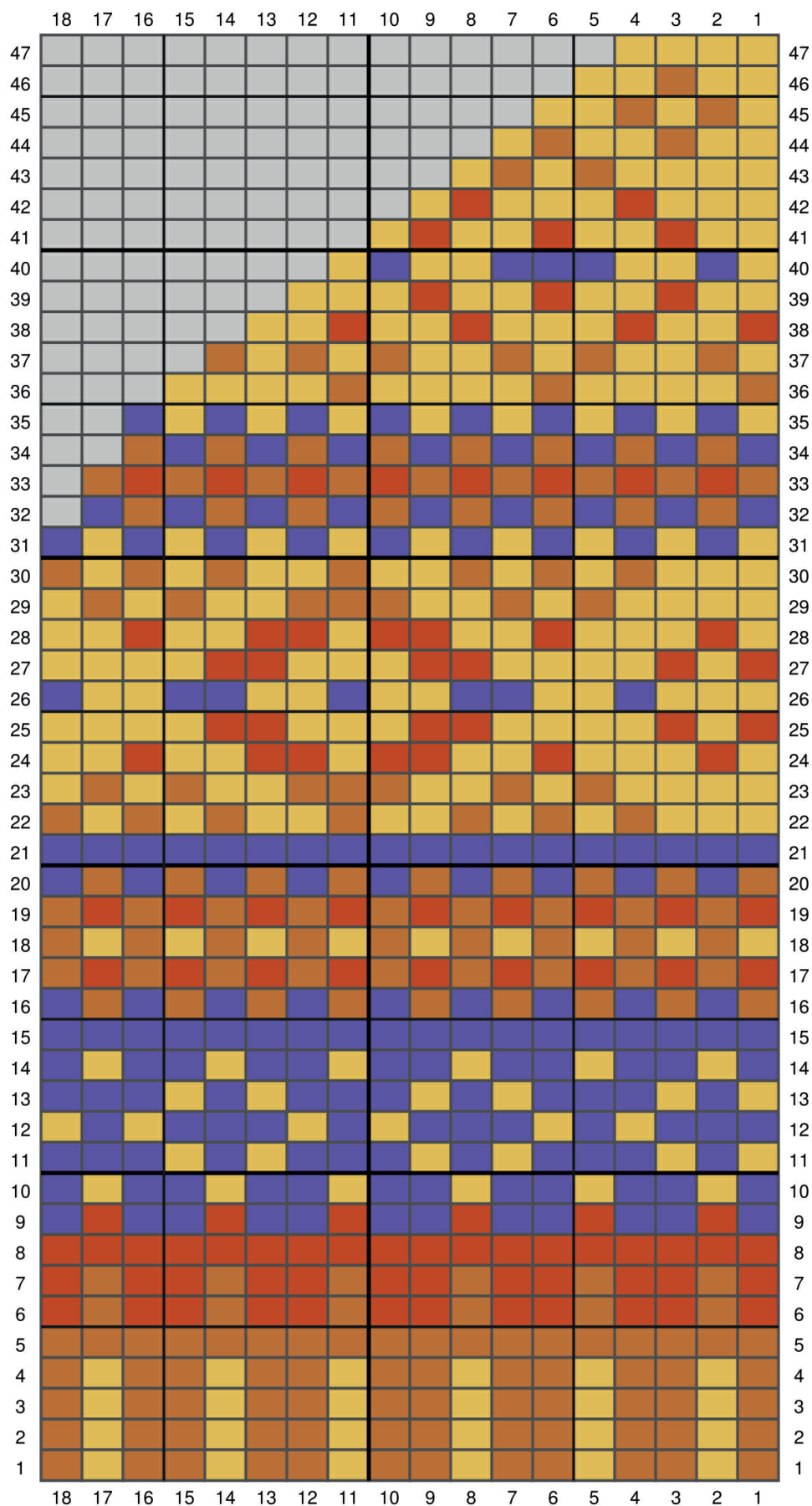
The hat requires to be blocked to achieve a wearable size, and to expand the stranded yarn on the back of the Fair Isle section. It is intended to be a snug, secure fit for an average woman. Block the hat by soaking it in warm, slightly soapy water for 30 mins, then stretching to shape to fit your head (folded flat sideways from brim to crown). The precise size can be varied by more or less vigorous stretching. Do not stretch the ribbing, leave it slightly tighter than the rest of the hat. Allow it to dry naturally, flat on an old towel or similar. Enjoy wearing it on a wild and windy day, and remember the glorious colours and special sheep of Exmoor!

© 2020 Exmoor Horn Wool

Registered company no. 9132347

Company Secretary: Lindy Head, Harton Farm, Oakford, Tiverton Devon EX16 9HH. Tel. 01398 351209





- Earth Red
- Bossington bracken
- Heather purple
- no stitch
- Bossington Barley